



# INSTALLATION INSTRUCTIONS OF RIGID CORE FLOORING

NO ADDITIONAL UNDERLAYMENT PAD NEEDED.  
USE OF ADDITIONAL UNDERLAYMENT PAD WILL CAUSE  
FLEXION AND WILL VOID WARRANTY  
PLASTIC MOISTURE BARRIER (6 MIL) PRIOR TO INSTALLATION  
ON CONCRETE SLAB IS NEEDED

## INSTALLATION & MAINTANENCE INSTRUCTIONS

### Tools Required

- Utility Knife
- Straight Edge
- Tape Measure
- Small Rubber Mallet
- Spacers
- Installation Block

**THIS PRODUCT HAS UNDERLAYMENT PRE-ATTACHED**

### Prior to Installation

- Carefully check flooring material for any defects. Contact your supplier immediately if any defects are found.
- Room temperature shall be no less than 65° F(18°C) for 24 hours before, during and after installation.
- Remove quarter round, baseboard molding or cover base.
- Undercut doorway moldings the thickness of the flooring .
- Cartons must be stored horizontally at all times.
- Protect carton corners from damage.

### Wood Substrates

Wood floors must be double construction with a minimum thickness of 1", free from spring deflection . Top layer of plywood shall be 1/4" minimum thickness underlayment grade plywood.

# Concrete Substrates

RigidCore may be installed over on grade, above grade, or below grade concrete subfloors. Concrete floors shall be constructed in accordance with the American Concrete Institute (ACI)302.1 Guide for Concrete Floor and Slab Construction. Concrete shall be finished and cured according to ACI and have a minimum compressive strength of 3500 psi. Installation of moisture vapor barrier is needed prior to pouring of on or below grade slabs. Moisture vapor transmission shall not exceed 3lbs./4000 sq.ft./24 hours per ASTM F-1869 (Anhydrous Calcium Chloride Tet). Moisture may also be tested according to ASTM F2170 (Standard Test Method for Determining Relative Humidity in Concrete Floor Slabs using in situ probes). When tested according to this method, the internal relative humidity shall not exceed 75%. RigidCore may be installed over gypsum based underlayments.

## Existing Floors

RigidCore may be installed over most smooth, single layer, hard surface existing floors. Check flooring for any curled areas around the perimeter or at seams and repair if necessary. Use a good quality cementitious based embossing leveler to smooth and fill the existing floor.

### WARNING

Do not sand, dry sweep, dry scrape, drill, saw, bead blast or mechanically chip or pulverize existing resilient flooring, backing, lining felt or asphaltic "cutback" adhesive. These products may contain asbestos fibers or crystalline silica. Avoid creating dust. Inhalation of such dust is a cancer and respiratory tract hazard. This product contains no asbestos.

## Substrate Preparation

- All substrates must be dry, clean, smooth, level, free from all existing adhesive residues and free from movement or deflection.
- The substrate must be level within 3/16" over a 10ft. area.
- Fill and level all plywood seams and concrete cracks, construction joints, control joints, depressions, grooves or other irregularities with a latex fortified, cementitious patching compound.
- Sweep and/or vacuum substrate to remove all dust and debris.

## Getting Started

- RigidCore is a floating floor and should not be glued or nailed to the substrate.
- RigidCore is intended for indoor use only.
- Determine in which direction the planks will be installed. It is preferred to lay the planks parallel to the longest room dimension.
- For floor surfaces exceeding 1225ft<sup>2</sup> and or lengths exceeding 35ft, in any direction, use expansion moldings.
- Do not install cabinets on planks.
- Carefully measure the room to determine squareness and width of the last row of planks. The width of the last row can not be less than 2" excluding the tongue. The width of the first row will need to be cut accordingly.
- A minimum of 5/16" expansion space is required around the perimeter of the room and all vertical objects.
- Inspect all planks for visible defects and damage in a well light area before and during installation. Do not install damaged planks. The original purchaser is responsible for approval and acceptance of all products.
- During installation, inspect the groove area and remove any debris that may prevent proper assembly of planks.

# Installation

1. Begin laying planks from the left side of the starting wall and work to the right side. The tongue side of the plank shall face the starting wall.
2. Place 5/16" spacers between the short and long side of the planks and the wall. Always position one spacer between the wall and where the planks engage or join.
3. The end joints of the planks in the first row are assembled by inserting the tongue side into the groove side of the previous plank at a low angle. Gradually lower the plank down laterally until the end joint closes, ensuring that the planks are perfectly aligned.
4. Install remaining full planks in the first row.
5. The last plank in the first row will need to be cut. Measure the distance between the wall and the surface of the last full plank. Subtract 5/16" from this measurement to allow for the spacer. If this measurement is less than 8", the length of the first plank in the row must be cut. This will allow for a longer plank at the end of the row. The first and last plank in each row must be at least 8" in length. Planks are cut using a sharp utility knife and straight edge/carpenter's square. Score the surface of the plank with a utility knife, and then snap the plank at the score line.
6. The remaining piece cut off from the last plank in the first row may serve as the first plank in the second row provided it is at least 8" long. Always stagger end joints from row to row a minimum of 8".
7. Install the long side of the first plank of the second row. Remember to place a 5/16" spacer between the wall and the short side of the plank. Inert the tongue side into the groove side of the previous row at a low angle and lower laterally to the substrate.
8. Install the second plank in the second. Position the long side of the plank with the tongue overlapping the groove of the planks in the previous row approximately 1/8". Then angle the end joint into the previous plank. Angle the plank up and gently push forward until the plank locks into the previous row. Continue installing remaining planks in the second row. It is important to make sure that the first two rows are straight and square as they can affect the entire installation.
9. Continue working from left to right, row by row. Be sure to maintain a 5/16" space around all walls and vertical objects and maintain a random appearance in grain design. Offset end joints and minimum of 8".

## Finishing the Installation

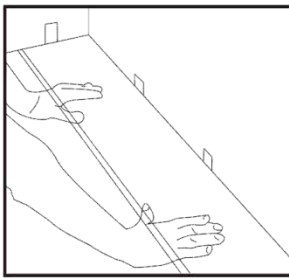
- After all planks have been installed, remove spacers from the perimeter of the room.
- Install transition moldings. Do not fasten any moldings to or through the flooring.
- Pre-drill and install quarter round or baseboard molding to the wall. Molding must be sufficient size to cover the 5/6" space between the floor and the wall.
- Use plywood to cover the top of the flooring when moving heavy furniture or appliances into position.
- Use proper protectors under the legs and feet of the furniture.
- Post installation temperature must be maintained between 55°F and 90°F along with the relative humidity must be maintained between 40% and 70%.

## Maintenance

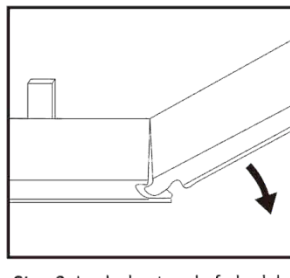
Please follow the recommendations in this guide to retain the fresh look and protect the finish of the floor. After installing the floor, we recommend a first cleaning to remove any loose dirt or debris that may have been introduced during the installation process. Also, in order to protect the flooring surface from abrasive dirt and debris, we recommend installing an effective barrier system to limit the amount of moisture, dirt, and grit that may enter the flooring area. Please check any new cleaning agents on a small test patch of the floor in an inconspicuous area, and avoid using harsh cleaners or ammonia based on cleaning products.

1. First, sweep and vacuum the floor surface to ensure removal of all loose dust dirt, and debris. Using a damp mop, scrub the flooring surface using warm, clean water, rung out several times or as needed. The use of a dry mop or wet vacuum to remove water and allow to dry.
2. Do not allow pets with unclipped nails to damage your RigidCore flooring. It may result in severe scratching to the surface. The same is true for any high heeled shoes that do not have proper tips on the heels.
3. Avoid exposure to direct sunlight for prolonged periods of time. During peak sunlight hours, use drapes or blinds to minimize the direct sunlight on the RigidCore flooring. Most types of flooring will be affected by continuous strong sunlight. In addition, excessive temperatures are not recommended. Long term continuous inside temperatures over 95°F combined with strong direct sunlight will damage the flooring and cause the installation to fail. Some natural ventilation or intermittent air conditioning in vacant homes should be considered.
4. Do not wax your flooring. The surface of your floor is very dense and nonporous, which prevents wax from penetrating and thus builds up a bed for yellowing and dirt collection. The same nonporous feature also provides all the protection against wear and staining that you will need.
5. If your floor has been exposed to excessive amounts of water due to flooding, do not panic, RigidCore is waterproof. Simply remove the water as quickly as possible. A dehumidifier should be promptly turned on in the room to reduce the moisture levels back to normal. Do not dry the room below the normal moisture level that existed previously.

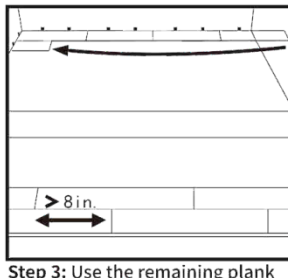
# INSTALLATION GRAPHICS



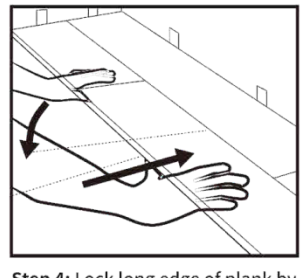
**Step 1:** Begin installation working from left to right. Insert 1/4" wide spacers at ends and edges where planks meet wall.



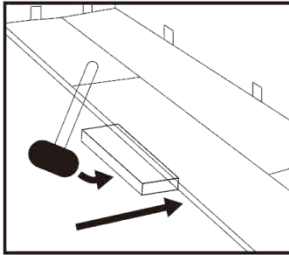
**Step 2:** Lock short end of plank by inserting tongue into groove at an approximate 30 degrees angle and drop into place. Continue this process throughout the installation.



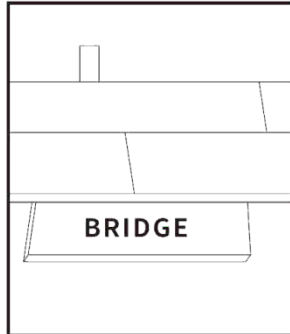
**Step 3:** Use the remaining plank from your cut piece to begin the next row (you will repeat this process throughout the installation). Note: It is recommended that you space end-joints by a minimum of 8 inches.



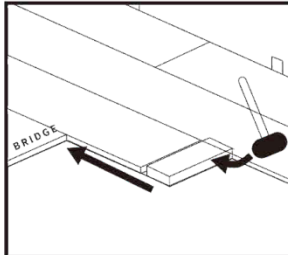
**Step 4:** Lock long edge of plank by inserting tongue into groove at an approximate 15 degrees angle and drop into place. Next slide toward end of previously installed plank until the tongue touches the groove.



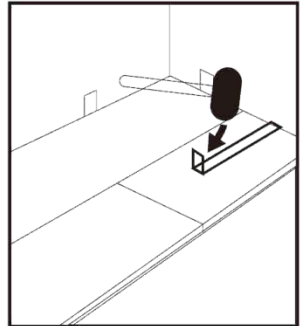
**Step 5: IMPORTANT!** Use a hammer and tapping block to tap the long edge of the plank to ensure a tight fit. Note: Tapping block should be a minimum of 10" to 12" long. It is important to note that any/all gapping can/will compromise the locking system.



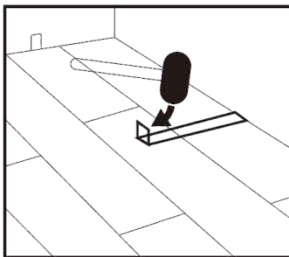
**Step 6:** Attach a scrap piece of floor to bridge gap between ends of planks.



**Step 7:** Tap end of plank with hammer and tapping block to lock ends of planks together. Remove support bridge and continue with this method until you have completed installing the row. Note: BE SURE TO TAP ON EDGE OF VINYL SO AS NOT TO DAMAGE LOCKING PROFILE.

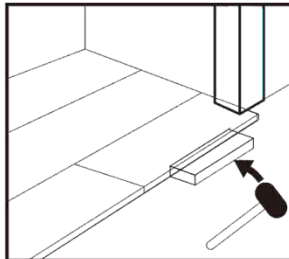


**Step 8:** Use hammer and pull bar to lock final piece in row. Insert spacer at end of row. Continue installation to final row.

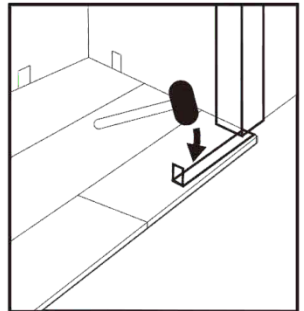


**Step 9:** Use hammer and pull bar to lock long edges of planks on final row.

## INSTALLING UNDER DOOR JAMBS:



**Step 1:** Undercut door jamb to provide space to allow plank to slide freely. Tap long edge with hammer and tapping block to lock long edge.



**Step 2:** Use hammer and pull bar to draw and lock short end of plank.

### -PLEASE NOTE-

The use of a tapping block is not necessary to install your floor. The use of a tapping block, pull bar, and rubber mallet must be used delicately to not damage the connection system or physical appearance of the floor. Damage resulted from misuse of a tapping block or mallet will not be accepted and all warranty will be void for material affected.

## LENGTH of AREA

WIDTH of AREA

X	2	3	4	5	6	7	8	9	10	11	12	13	14	15	16	17	18	19	20
2	4	6	8	10	12	14	16	18	20	22	24	26	28	30	32	34	36	38	40
3	6	9	12	15	18	21	24	27	30	33	36	39	42	45	48	51	54	57	60
4	8	12	16	20	24	28	32	36	40	44	48	52	56	60	64	68	72	76	80
5	10	15	20	25	30	35	40	45	50	55	60	65	70	75	80	85	90	95	100
6	12	18	24	30	36	42	48	54	60	66	72	78	84	90	96	102	108	114	120
7	14	21	28	35	42	49	56	63	70	77	84	91	98	105	112	119	126	133	140
8	16	24	32	40	48	56	64	72	80	88	96	104	112	120	128	136	144	152	160
9	18	27	36	45	54	63	72	81	90	99	108	117	126	135	144	153	162	171	180
10	20	30	40	50	60	70	80	90	100	110	120	130	140	150	160	170	180	190	200
11	22	33	44	55	66	77	88	99	110	121	132	143	154	165	176	187	198	209	220
12	24	36	48	60	72	84	96	108	120	132	144	156	168	180	192	204	216	228	240
13	26	39	52	65	78	91	104	117	130	143	156	169	182	195	208	221	234	247	260
14	28	42	56	70	84	98	112	126	140	154	168	182	196	210	224	238	252	266	280
15	30	45	60	75	90	105	120	135	150	165	180	195	210	225	240	255	270	285	300
16	32	48	64	80	96	112	128	144	160	176	192	208	224	240	256	272	288	304	320
17	34	51	68	85	102	119	136	153	170	187	204	221	238	255	272	289	306	323	340
18	36	54	72	90	108	126	144	162	180	198	216	234	252	270	288	306	324	342	360
19	38	57	76	95	114	133	152	171	190	209	228	247	266	285	304	323	342	361	380
20	40	60	80	100	120	140	160	180	200	220	240	260	280	300	320	340	360	380	400

\*Please account for 5%-10% more material than needed for project